

**ADJUSTABLE LATCH BOLT WITH THROWS**

Latch bolt interchangeable with roller bolt cod. 0385



**CONSTRUCTIVE FEATURES:**

Zinc and plastic plated steel case and cover - Stainless steel forend - Nickel-plated special alloy anti-noise latch bolt - Zinc-plated special alloy square spindle device  $\varnothing$  8 mm.

**WORKING:**

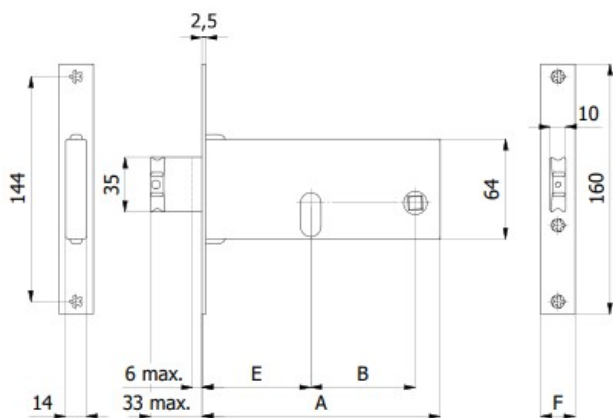
Key driven throws - Handle or key driven latch bolt.

**HAND:**

Reversible.

**PROVIDED WITH:**

Cylinder screw.



COD.	E	F	A	B	Throws	kg	Box	Box
380	60	16	133	47	2	0,44	1	10
380/F22	60	22	133	47	2	0,46	1	10
780	70	16	153	67	2	0,48	1	10
780/F22	70	22	153	67	2	0,50	1	10
780-TT/F15	70	14,6	153	67	2	0,48	1	10
880	80	16	163	67	2	0,51	1	10
880/F22	80	22	163	67	2	0,53	1	10
880-TT/F15	80	14,6	163	67	2	0,51	1	10

