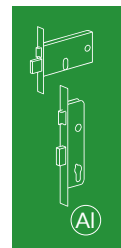
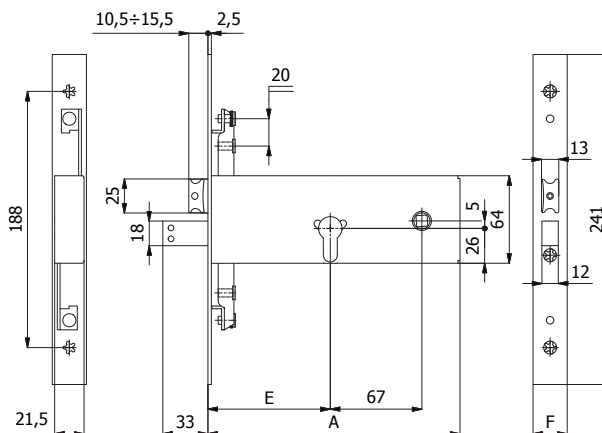




**DEAD AND ADJUSTABLE LATCH BOLT 3 LOCKING POINTS**

Latch bolt interchangeable with roller bolt cod. 05935



**CONSTRUCTIVE FEATURES:**

Zinc and plastic plated steel case and cover - Stainless steel forend - Nickel-plated steel dead bolt - Nickel-plated special alloy latch bolt - Burnished steel square spindle device  $\varnothing$  8 mm.

**WORKING:**

Key driven dead bolt - Handle or key driven latch bolt.

**HAND:**

Reversible.

**PROVIDED WITH:**

2 forend spacers cod. 0624 N (forend 25 mm) or 2 cod. 0625 N (forend 22 mm), stainless steel fixing screws, assembling instructions.

For series 1970: 2 roses cod. 0120 N, cylinder screw.

For series 4970: Cross key cylinder cod. 4062 or 4062/1 (with long keys) , 3 keys, 2 roses cod. 0441 N.

COD.	E	F	A	Throws	Cylinder	Key			
1970	90	25	186	3			1,04	1	5
1970/F22	90	22	186	3		-	1,02	1	5
11170	110	25	206	3			1,11	1	5
11170/F22	110	22	206	3			1,09	1	5
4970	90	25	186	3			1,12	1	5
4970/F22	90	22	186	3	cod. 4062	cod. 4100	1,10	1	5
41170	110	25	206	3			1,19	1	5
41170/F22	110	22	206	3			1,17	1	5
4***/1		Long keys			cod. 4062/1	cod. 4101	+ 0,02	-	-