

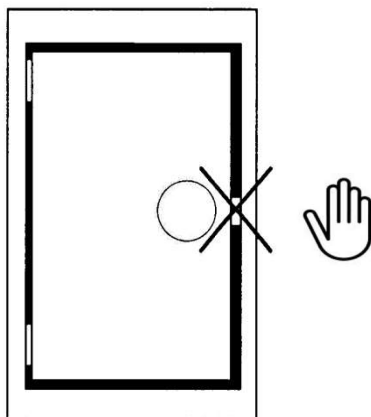


# COMBINATION LOCK A199, A141 & A142

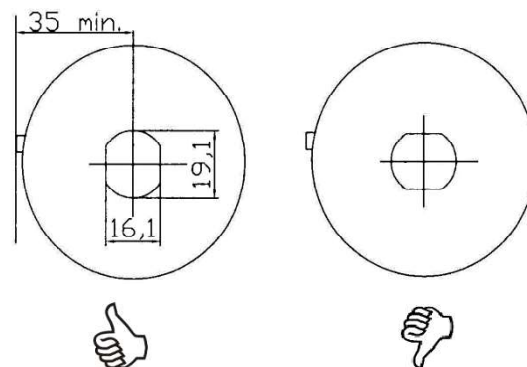


## ASSEMBLY INSTRUCTIONS FOR FITTER AND SUPERVISOR

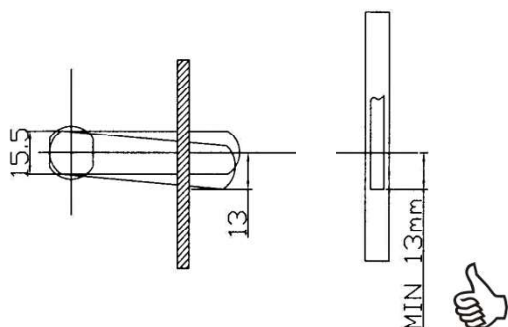
**FOR SAFETY REASONS DO NOT USE ON NON-REBATED DOORS!**



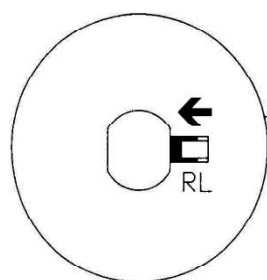
### RECOMMENDED PIERCING HOLE SIZE



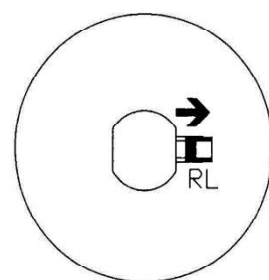
**IF LOCKING INTO A SLOT ALLOW ENOUGH PLAY FOR THE CAM**



**MOVEMENT TO OPEN  
POSITION OF THE R/L SWITCH**

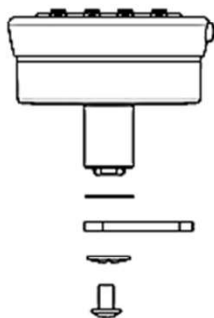


SET SWITCH TO „R“  
FOR RIGHT DOOR (DIN R)



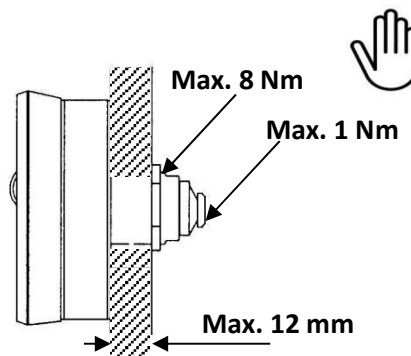
SET SWITCH TO „L“  
FOR LEFT DOOR (DIN L)

### ORDER OF COMPONENTS FOR CAM FIXING



- 1- WAVY WASHER
- 2- CAM
- 3- TOOTHED WASHER
- 4- TORX SCREW TX20

### MAXIMUM PANEL THICKNESS AND TORQUE LIMITS



BA.002\_A199.A141&A142\_V6

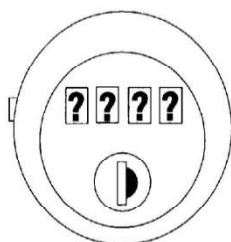


## COMBINATION LOCK A199, A141 & A142

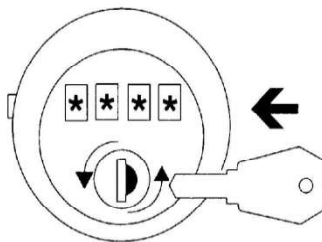


### ASSEMBLY INSTRUCTIONS FOR FITTER AND SUPERVISOR

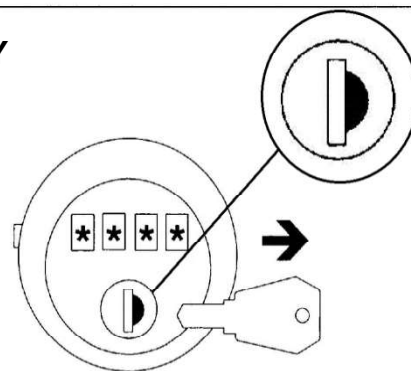
#### CODE FINDING VIA SERVICE KEY



**1- CODE UNKNOWN!**  
THE LOCK MUST BE  
HORIZONTAL IN THE INDEX  
POSITION.



**2- INSERT THE SERVICE KEY INTO  
THE BARREL AND TURN THE KEY  
ONE FULL TURN (360°) AT LEAST  
TO THE LEFT. THE SET CODE WILL  
APPEAR AUTOMATICALLY.**



**3- WHEN THE LOCK IS TURNED TO  
THE LATCHING POSITION, MAKE  
SURE THAT THE DEPRESSION IN  
THE CAP IS ON THE RIGHT SIDE AS  
SHOWN.**

#### CAUTION

- THE R/L SWITCH MUST BE SET ONLY IN A HORIZONTAL CLICK POSITION (INDEX POSITION) TO AVOID THE DAMAGE OF THE COMBINATION LOCK.
- COMPONENTS CAN BE DAMAGED IF THE CAM NOT BE HELD IN POSITION WHILE TIGHTENING OR LOOSENING THE FIXING SCREW.
- MAKE SURE THAT THE CAM MOVES FREELY AND IS NOT OBSTRUCTED WHILE OPERATING THE LOCK.
- ANTI-TURN WASHER FOR WOODEN FURNITURE AVAILABLE ON REQUEST.
- NOT SUITABLE FOR 2 AND 3-POINT LOCK SYSTEMS.
- OPERATING TEMPERATURE: 0° ... +50° C (32°... +122° F)



#### Troubleshooting

Fault	Cause	Corrective measures
Hard lock movement	Cam scrapes on the door frame	Increase play between cam and frame i.e. new cam configuration
Lock cannot be opened with the set code	Mistake made during the code setting process	Carry out code finding process
Lock cannot be opened with the service key	Code wheels do not jump to the set code	Enter the service key, turn 90° and press the code setting button.

BA.002\_A199.A141&A142\_V6